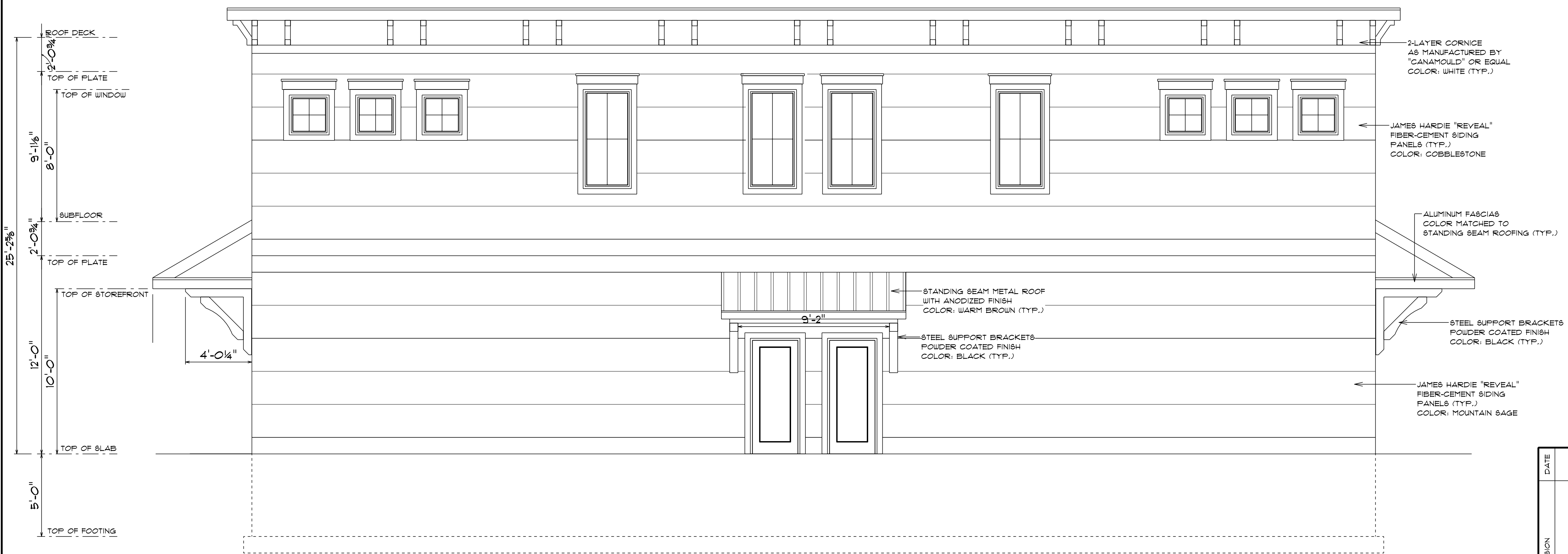




WEST ELEVATION
SCALE: 1/4" = 1'-0"



EAST ELEVATION
SCALE: 1/4" = 1'-0"

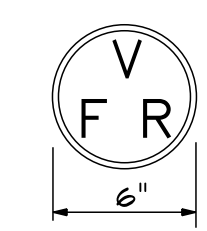
NOTE:
ELECTRICIAN MUST CERTIFY THAT ALL INSTALLED LIGHTING MEETS THE 2015 INTERNATIONAL ENERGY CONSERVATION CODE.

NOTE:
H.V.A.C. INSTALLER MUST CERTIFY THAT THE H.V.A.C. SYSTEM MEETS THE 2015 INTERNATIONAL ENERGY CONSERVATION CODE.

NOTE:
SIGNAGE SIMILAR TO THAT SHOWN TO THE RIGHT IDENTIFYING WOOD (FLOOR & ROOF) TRUSSES AND THE TYPE OF CONSTRUCTION SHALL BE LOCATED AT ALL EXTERIOR DOORS AND SPRINKLER CONNECTIONS.

NOTE:
ENTIRE BUILDING IS TO BE EQUIPPED THROUGHOUT WITH A SPRINKLER SYSTEM MEETING THE REQUIREMENTS OF NFPA 13.

NOTE:
HYDRAULIC CALCULATIONS AND SPRINKLER SYSTEM DESIGN AND PLANS MUST BE SUBMITTED TO THE FIRE MARSHAL'S OFFICE PRIOR TO SYSTEM INSTALLATION.



NO.	REVISION	DATE

DESIGNED BY:	
DRAWN BY:	
CHECKED BY:	
PROJECT NUMBER:	201013

DREAMSCAPES UNLIMITED
DESIGN WITH A NEW POINT OF VIEW

6 MESHAN COURT
SARATOGA SPRINGS
NEW YORK 12866

(518) 581-8075 (PHONE/FAX)

EAST & WEST ELEVATIONS
146 SOUTH BROADWAY

DATE:	SEPT. 4, 2018
SCALE:	AS SHOWN
DRAWING NO.:	EL-1
SHEET NO.:	1